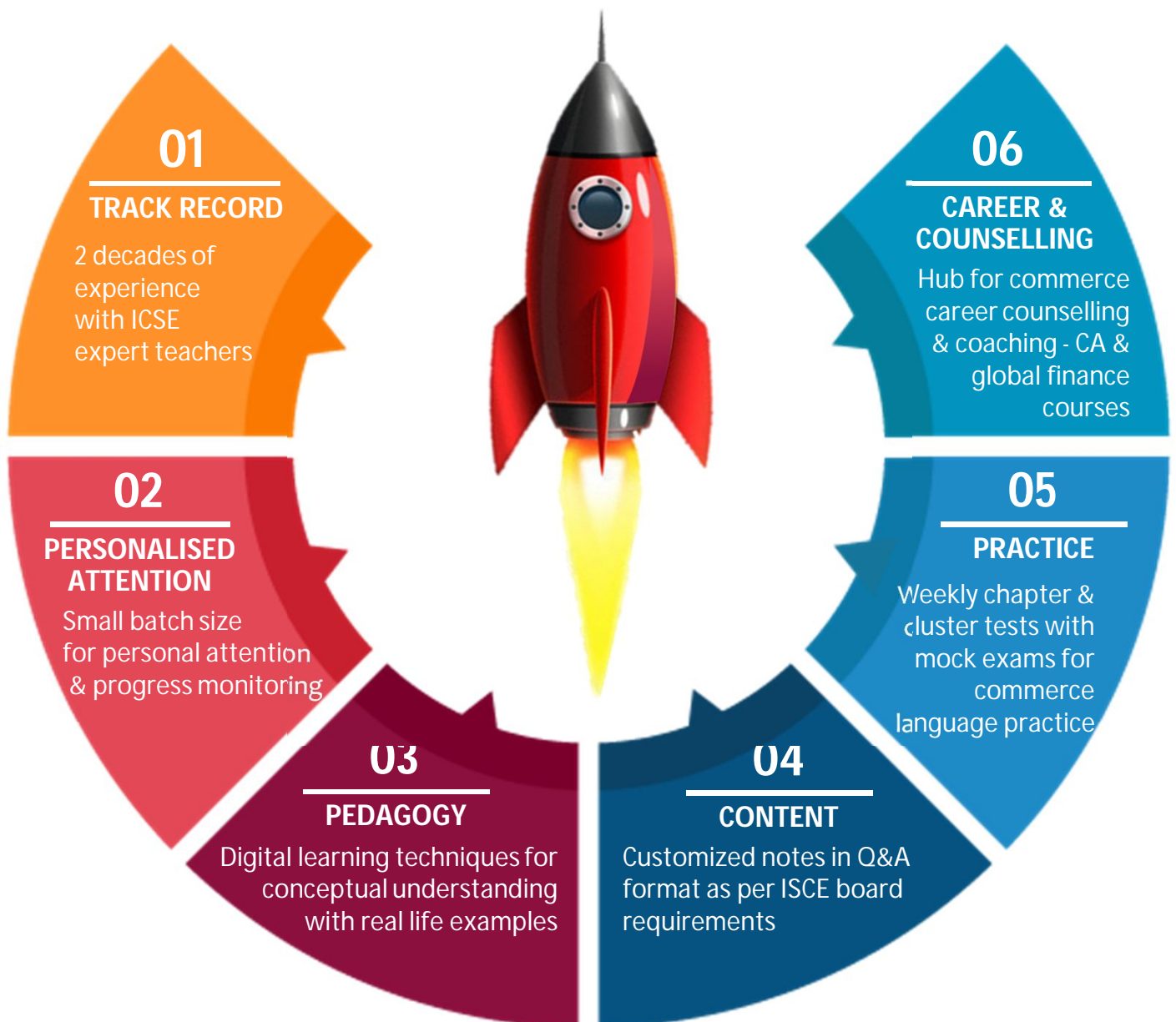


# Take off your **COMMERCE CAREER** with **POWER** of PINNACLE



<b>ICSE</b>	<b>College</b>	<b>C.A.</b>	<b>Global</b>
9th & 10th Comm. Studies	XI. XII Commerce	Foundation. Intermediate. Final	ACCA. CFA. CPA & more

# Team & Track Record

Team	Mentors
CA. Soni Thakker	Faculty - 25+ years of teaching ICSE   ISC   Commerce
CA. Pooja Shah	Faculty - 10+ years of teaching Commerce

## 9<sup>th</sup> Std (2020-21) Batch Plan

Period	Schedule
April-2020 to December 2020	Twice a week divided into: 1. Lecture session of 1.5 hours each and/or 2. Weekly tests , Cluster tests, Terminal Mock exam
Jan. 2021	Twice a week : Prelims, 2 <sup>nd</sup> Terminal and Final Mock exams

## 10<sup>th</sup> Std (2021-22) Batch Plan

Period	Schedule
March – May 2021 & Diwali Vacation	Lecture session : Twice a week , 2 hours each
April-2021 to Dec. 2021 (Regular)	1. Lecture session : Once a week, 2 hours each 2. Tests : Once a week 1.5 to 2 hours (Weekly tests and Cluster tests & Mock exams)
Dec. 2021, Jan. 2022	Prelims and Final Mock exams

## Fee Chart

Commercial Studies	Fees including GST	Installment
9 <sup>th</sup> Std. (AY 20-21)	~ 15,000	~ 5,000 on admission, balance before 1 <sup>st</sup> April, 2020
Combined Package 9 <sup>th</sup> Std. (AY 20-21) + 10 <sup>th</sup> Std. (AY 21-22)	~ 30,000	~ 10,000 on admission, ~ 10,000 before 1 <sup>st</sup> April, 2020 ~ 10,000 before 1 <sup>st</sup> May, 2020

# This is what OUR STUDENTS have to say !

*"The learning process at Pinnacle is interesting with explanation over audio video and connecting with practical examples that we come across in the world around us. Concepts are explained with relevant facts and ideas. The quizzes and interacting sessions hold more attention. Key words make the notes very distinctive. Regular tests boost practice of what is taught."*

**- Arth Nandu - Shishuvan School (9<sup>th</sup> std.)**

---

*"Learning at Pinnacle Education under the able guidance of Soni ma'am has proved to be a boon for me. Her teaching through audio visual techniques along with real life examples has made the conceptual understanding interesting, clear and easy. The notes provided by her, with highlighted key words and also the weekly tests taken by her helped us to score well in our exams. Soni ma'am not only has motivated me but has also made me feel confident and has brought the best out of me in the subject. A big thank you to Soni ma'am and Pinnacle Education ."*

**- Uvajza Gala - Shishuvan School (9<sup>th</sup> std.)**

---

*"Commerce for me had been a new subject. But with Pinnacle Education it has been really easy and smooth going. Sessions with power point presentations and real-life examples gave me better understanding of the topics. Regular test and pop quizzes helped me gain confidence about the subject. The notes with tricks and codes for remembering made the learning process a lot easier. "*

**- Jeel Gada - Shishuvan School (9<sup>th</sup> std.)**

---

*"Pinnacle has made the subject fun and interesting through various teaching methods. Learning with the help of power point presentations, real-life examples and of course quiz has helped me to engross in the subject. Practice tests for every chapter, have always helped to get from the better to the best. The way of writing answers and underlining the keywords has also helped a lot. It wouldn't have been plausible without our mentor Soni ma'am who has always been optimistic and productive towards the subject. The moto "I am Possible 100" has always inspired me."*

**- Tanisha Chheda - Shishuvan School (9<sup>th</sup> std.)**

---

*"The teaching at Pinnacle is amazing. The teaching through the power point presentation is very interesting and the quizzes conducted in the class are very interactive and the weekly tests help us keep our mind sharp at all times. In school we can show what we know before they even say a word all because of Pinnacle. Thank you Pinnacle!"*

**- Kathan Poladia - Shishuvan School (9<sup>th</sup> std.)**

---

*"Pinnacle has a great way of teaching that is with videos and power point presentations. Numerous real-life examples and conceptual clarity has helped me learn easily. The notes provided are extremely useful for keywords. Regular tests and quiz have been very helpful."*

**- Niyati Maniar - Shishuvan School (9<sup>th</sup> std.)**

# Your Journey from Classroom to Boardroom begins here...

9<sup>th</sup> & 10<sup>th</sup> – ICSE  
Commercial Studies

11<sup>th</sup> & 12<sup>th</sup>  
Commerce



## Professional Courses

- CA
- ACCA

## Short Term Courses

- Capital Markets
- Business Analytics
- Soft Skills
- GST
- and more

Graduation

## Professional Courses after TY

- CFA
- CPA
- and more

**PINNACLE+**  
EDUCATION  
(A Synthesis Group Company)

### Contact Details

Room No. 6-7, Plot 467, 1st Floor, Vasant Breezy Chambers,  
Maheshwari Gardens, King's Circle, Matunga, Mumbai - 400019  
Phone: (022) 24029444 +91 8291702707  
Email: info@pinnacleedu.in [f/PinnacleEducationMumbai](https://www.facebook.com/PinnacleEducationMumbai)